



Fundraising *Pack*

"Doing good, does
you good... Thank
you for caring, it
means we can too."



Your support has brought us this far

We would love you to get involved and support Garden House Hospice Care. Whether you are fundraising in memory of a loved one or because you care about the Hospice we will support you with advice and tips to make the most of your fundraising.

We rely on the generosity of people like you to raise the funds we need each year to care and support patients with life-limiting illnesses. Every pound you raise will make a huge difference to the patients, their families and carers in North Hertfordshire, Stevenage and surrounding towns and villages of Central Bedfordshire and Cambridgeshire.

We hope that this fundraising pack will inspire you to raise money for the Hospice and also give you great ideas to make fundraising easier.



Why we need you...

Garden House Hospice Care needs £5m a year to provide services to a catchment area of 230,000 people. Every pound you raise will make a huge difference to the lives of patients and their families. Here are a few examples of what your fundraising will contribute to:

£2 Will pay for a cup of tea or coffee and a snack for a patient or family member.

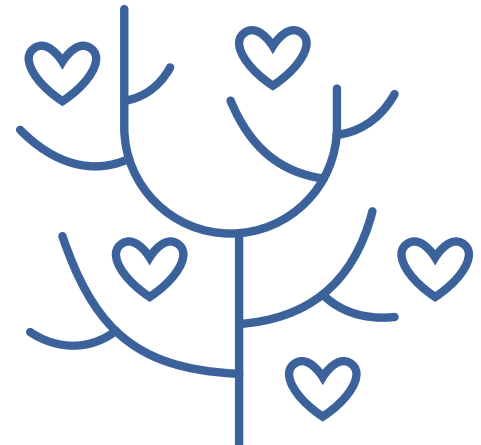
£19 Will pay for complementary therapy session for a patient. For example a massage, homeopathy or reflexology.

£27 Could pay for a Hospice at Home visit by two specialist nurses. More patients than ever are being cared for at home.

£56 Will pay for training session for a Compassionate Neighbour. Launched in February 2018 this scheme combats social isolation and loneliness. We currently have over 100 trained Compassionate Neighbours.

£270 The cost of running the in patient unit each hour. It costs £5 million per year to run all the patients care services in the Hospice.

Free We have a team of over 550 volunteers who work right across the Hospice. This saves the Hospice £650,000 each year.





"Your kindness, support, professionalism and empathy, gave us some light in a time of complete darkness for us".

"A place of calm,
care, love, compassion
and true support."



There are so many ways to *fundraise* for Garden House Hospice Care...



Take on a Challenge

We know lots of you are keen runners, cyclists, walkers and adventure enthusiasts. Our aim is to give more of you the opportunity to complete a challenge in aid of the Hospice. Find out more about organising a challenge event, contact our Challenge and Endurance Event Manager: 01462-679540.

Host an Event



The sky's the limit with the range of events you can organise or take part in to raise money. Whether it's a head shave, garden party, pamper evening or quiz night. This is where you can fundraise whilst having great fun.

Care 4 a Cuppa

Why not host your very own tea party in aid of the Hospice. It's a great way to socialise with friends whilst fundraising. We will support you every step of the way with a Care 4 a Cuppa organisers pack. You can download your Care 4 a Cuppa Pack now: www.ghhospicecare.org.uk/support-us/fundraising

Corporate Fundraising.

Get your company involved. It's a fun way to raise funds whilst having a great time with your work colleagues. Dress down days, team challenges, charity of the year or match funding are but some examples of where companies currently support the Hospice.



50

fundraising
ideas...

Fundraising ideas...

Quiz Night

Strictly Come Dancing

Garden Party

Themed Jumper Day

Golf Day

Run A Marathon

Head Shave

Pamper Evening

Football Match

Snail Racing

Auction

Tombola

Raffle

Babysitting

Dress Down Day

Movember

Give It Up Month

Bake Off Event

Half Marathon

Cheese and Wine Evening

Muddy Obstacle Event

Bingo Night

Arts and Craft Fayre

Zumbathon

Swear Box

Gym Triathlon

Car Wash

Fire Walking

Cake Sales

Wing Walking

Cycle Ride

Triathlon

Bad Tie Day

Five-A-Side

Skydive

Sponsored Walk

Race Night

Food Marathon

Darts Competition

Carol Concert

Christmas Tree Collection

Dine In Evening

Pop Up Café

Tractor Rally

Scarecrow Festival

Cider and Cheese Festival

Floral Arts Evening

Painting Classes

Fashion Show

Classic Car Show



Get R.E.A.L...

Research

Decide what type of event you are going to hold or take part in.

Engage

Get your friends, family and colleagues involved and remember to spread your word on your social media pages.

Ask

Sometimes its as easy as just asking. The number one reason people won't give money to your cause is that they are not asked.

Love

Be Loud and Proud. Shout about what you are doing. The more passionate you sound the more this will rub off on others.

We can provide you with official Garden House Hospice Care sponsor forms to help you ask for support.



Get Sponsored

You can also set up an online fundraising page. This is very easy but check the online charges. Don't forget to share the link across your social media pages to encourage donations.

Double your money with matched giving. Many companies offer the chance to double the money you have raised. Why not check if this is something your employer offers.

Raising money in memory of someone is a wonderful dedication. How you choose to remember is personal to each individual. Supporters have chosen to walk, run, give a regular donation or taken part in a community event such as Care 4 a Cuppa to remember someone special.

Gift Aid

For every £1 the people who are sponsoring you donate (providing they are paying tax at the time of donation) HMRC will give us an extra 25p at no cost to them. So, in order for us to turn every pound raised into £1.25, please make sure all of your supporters use Gift Aid on their donations.

We'll do all we can to help make fundraising easy!

Put the fun into fundraising, we have a whole range of support and advice on offer including:

- Garden House Hospice Care information leaflets and banners
- Garden House Hospice Care logo - please contact us for guidelines
- Balloons
- Collection tins/buckets
- Garden House Hospice Care t-shirts and running vests.

If you are doing a sporting event we can provide you with a running vest, t shirt or cycling jersey.

Just choose what you would like from the list above and decide on the quantities that you need.

Contact the Fundraising Team for more information on 01462 679540.



"It's fun, the people are all friendly, great way to raise money".

"What more can I say, it is a home from home and a great big hug which always makes me feel better. The hospice have managed to get me back on my feet more than once and I can't thank them all enough!!!! Xxx"



How to get your money to Garden House Hospice Care



You've done the hard bit, here's how to send the money to us so we can put it to work!:

- **Online.** If supporters donate using your online fundraising page, the money will be transferred to Garden House Hospice Care automatically. It's safe and secure.
- **Cheque.** Donations can be made out to Garden House Hospice Care and sent to the address on the back cover. Please always include your name, address and how you raised the funds.
- **Telephone.** We are able to take credit/debit card donations over the phone - give the Fundraising Team a call on 01462 679540.
- **BACS transfers.** We can take balance transfers,. Please give the fundraising team a call for the details you will need to transfer the funds.

- **Cash.** Pop in and see us during office hours (9am-5pm). We love meeting our fundraisers! You can also hand it in at reception, which is open until 7pm all week. Please include your name, address and how you raised the money.



Do let us know if there are any special people to thank (with an extra address or email), if your donation is in memory of someone or if you would like us to print you a certificate to commemorate your fundraising success. If you have borrowed any Garden House Hospice Care fundraising items it's important to get them back to us ASAP so other supporters can use them.

Regular Giving

Hospices nationwide are facing a challenging time. It costs Garden House Hospice Care more than £5m a year to run our services. Your continued support through a regular contribution is a wonderful way of ensuring our specialist care and support are available for local people today, tomorrow and into the future.

Your gift will make a real difference to local people at one of the most difficult times of their lives.

- **A gift of £5 a month** could contribute to services run by our Hawthorne Day Centre.
- **A gift of £10 a month** could pay for our Hospice at Home nurse to make a home visit.
- **A gift of £20 a month** could support a bereaved family with counselling.

To set up a regular gift and make that difference today, call 01462 679540 and speak to our Individual Giving Manager or visit our website www.ghhospicecare.org.uk

Thank you for your support!





HOW TO KNIT A *Charlie Chick*

Please use **YELLOW** double knitting wool (4 ply is not suitable).
Size 4 mm needles (old size no. 8) **GARTER STITCH** THROUGHOUT.

Cast on 20 stitches. A good method of casting on is to make a slip stitch and place on left hand needle. Put the right needle at the back of the slip stitch and make another stitch. Continue in this manner, i.e. putting the right-hand needle between the last two stitches until you have 20 stitches.

If the casting on is too loose, we cannot make the egg stay in the body.
(Knitting into the back of the stitches on the first row makes it tighter)

- Knit 6 rows
- Increase 1 stitch at each end of the next 9 rows (38 stitches)
- Knit 1 row
- Cast off 11 stitches at the beginning of the next two rows (16 stitches)
- Knit 10 rows
- Knit 2 tog 8 times (8 stitches)
- Knit 2 tog 4 times (4 stitches)
- Knit 2 tog twice (2 stitches)

Fasten off remaining 2 stitches leaving a 12-inch length of wool which is sufficient for the chicks to be sewn up. If you can, please sew up the Charlie Chicks.






Thank you for supporting Garden House Hospice Care

Care *for a* Cuppa?



Get together with friends, colleagues and family, have a cuppa and raise as much money as you can towards patient care for Garden House Hospice Care.

Why not organise a:

-  Coffee Morning
-  Afternoon Tea
-  Host a Tea Party



Visit our website to download your free fundraising kit, filled with everything you need to host a brilliant Care for a Cuppa.



For more information please contact our Fundraising Team on **01462 679540**



Registered Charity 295257

We've come a long way...

Your fundraising efforts will help us move towards our vision where everyone in our community with life limiting illnesses has equal access to excellent specialist palliative care.

Thank you.



You matter because you are you.
You matter to the last moment
of your life, and we will do all
we can, not only to help you die
peacefully, but also to live until
you die"

Dame Cicely Saunders
Founder of the modern hospice movement



*"Amazing sense
of "in it together!"*

Next steps

Let us know what you have planned so we can help you every step of the way.

Every year we need to raise £5 million to provide our services and, without the support of people like you, we couldn't help the many local people who need us.

Thank you for your continuing support.

Garden House Hospice Care
Gillison Close
Letchworth Garden City
Herts
SG6 1QU

01462 679540
www.ghospicecare.org.uk



registered charity number 295257
Company number 02671267